

Monolithic crystal filter

MQF10.7-1500/02



Application

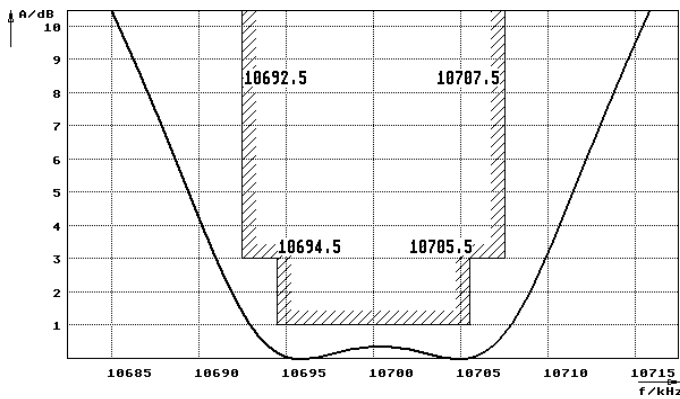
- 4 pol filter
- i.f.- filter
- use in mobile and stationary transceivers

Limiting values

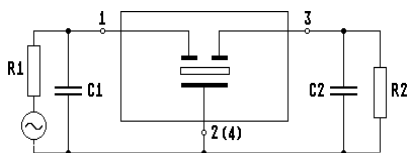
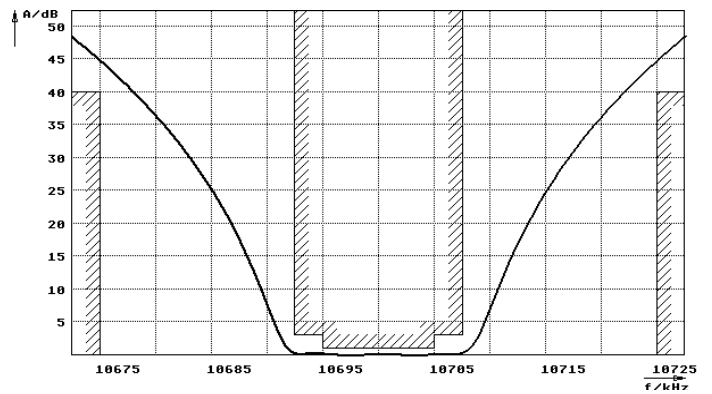
		Unit	Value
Center frequency	f_0	MHz	10.7
Insertion loss		dB	≤ 2.5
Pass band at 3.0 dB		kHz	± 7.50
Ripple in pass band	$f_0 \pm 5.00$ kHz	dB	≤ 1.0
Stop band attenuation	$f_0 \pm 25$ kHz	dB	≥ 40
Alternate attenuation	$f_0 + 300 \dots 1000$ kHz	dB	> 60
	$f_0 - 200 \dots 1000$ kHz	dB	> 80
Spurious response		dB	> 30
<hr/>			
Terminating impedance Z			
R1 C1		Ohm/pF	3000 1.5
R2 C2		Ohm/pF	3000 1.5
Coupling capacitance	Ck	pF	5.0
<hr/>			
Operating temp. range		$^{\circ}\text{C}$	-20... +70

Characteristics MQF10.7-1500/02

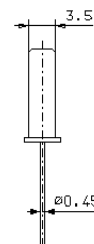
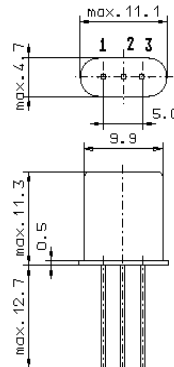
Pass band



Stop band



Pin connections: 1 Input
2 Input-E
3 Output
4 Output-E



GH3